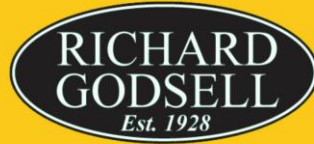


Estate Agents



Auctioneers



## **Wickham Road, Pokesdown, Bournemouth, BH7 6JX**

### **Guide Price £189,950 – Share Of Freehold**

Refurbished Two Bedroom Second Floor Flat | Communal Entrance | Entrance Hallway  
Stairs To Second Floor | Landing | 15ft Reception Room | Two Double Bedrooms  
Modern Bathroom | Modern Kitchen | Share Of Freehold | Parking | No Chain

# Wickham Road, Pokesdown, Bournemouth, BH7 6JX

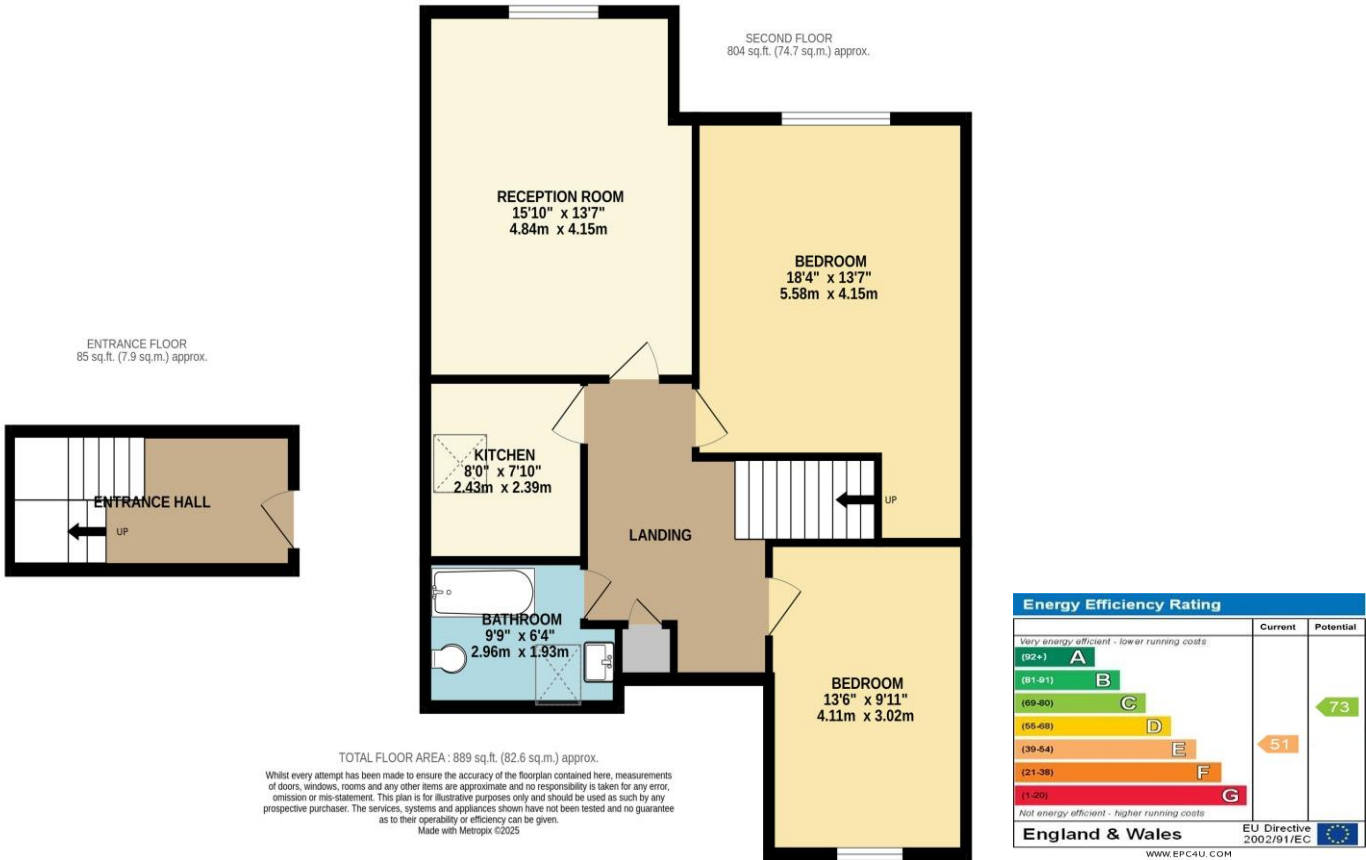
## Guide Price £189,950 – Share Of Freehold

**REFURBISHED TWO-BEDROOM FLAT.** A superbly presented two-bedroom, second-floor flat is offered with the benefit of a share of freehold. This stylish property has been comprehensively updated throughout, including a brand-new kitchen, new bathroom, full redecoration and new carpets. It is situated on a quiet road just a short walk from Pokesdown and Southbourne’s bustling high streets, as well as local schools and Pokesdown Rail Station, with easy access to Bournemouth and Kings Park.

The flat features double glazing, gas central heating with a new boiler, and a modern kitchen equipped with a built-in oven, hob, washer-dryer and fridge-freezer. The contemporary bathroom includes a bath with a shower, WC and basin. There is a spacious 15ft reception room and two double bedrooms, along with a useful loft space accessed via a pull-down ladder with lighting. A split-level entrance hallway provides additional versatility and could be used as a study area or for extra storage.

The property includes parking for one car. Viewing is highly recommended!

Tenure: Share of Freehold  
Share of the storage shed among the 3 resident owners  
Council Tax Banding: B  
EPC Rating: 51 | E



These particulars, whilst believed to be accurate are set out as a general outline only for guidance and do not constitute any part of an offer or contract. Intending purchasers should not rely on them as statements of representation of fact, but must satisfy themselves by inspection or otherwise as to their accuracy. We have not carried out a detailed survey nor tested the services, appliances and specific fittings. Room sizes should not be relied upon for carpets and furnishings. The measurements given are approximate. No person in this firm's employment has the authority to make or give any representation or warranty in respect of the property.